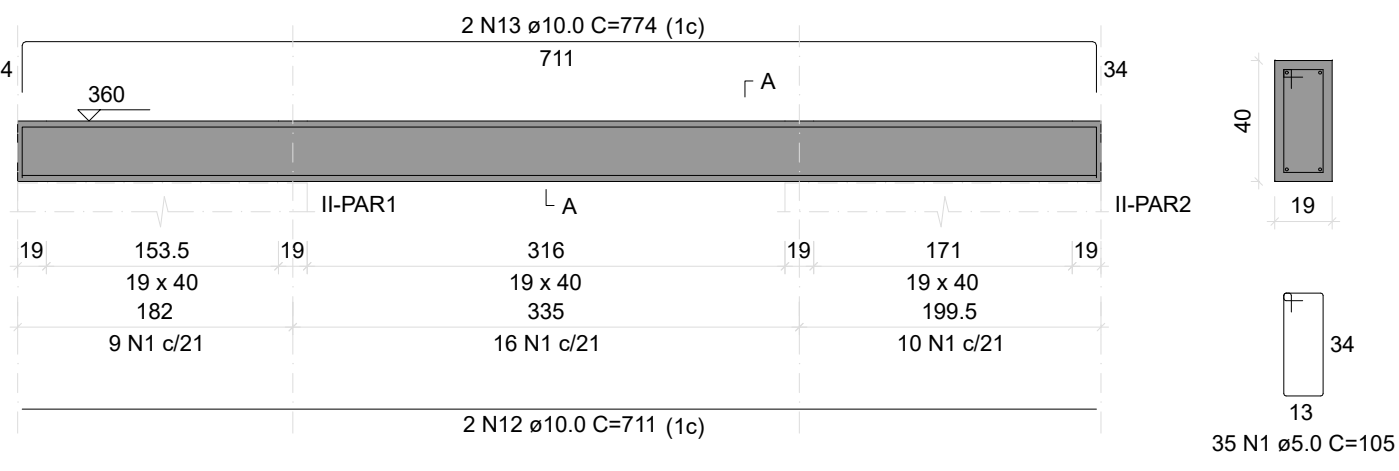
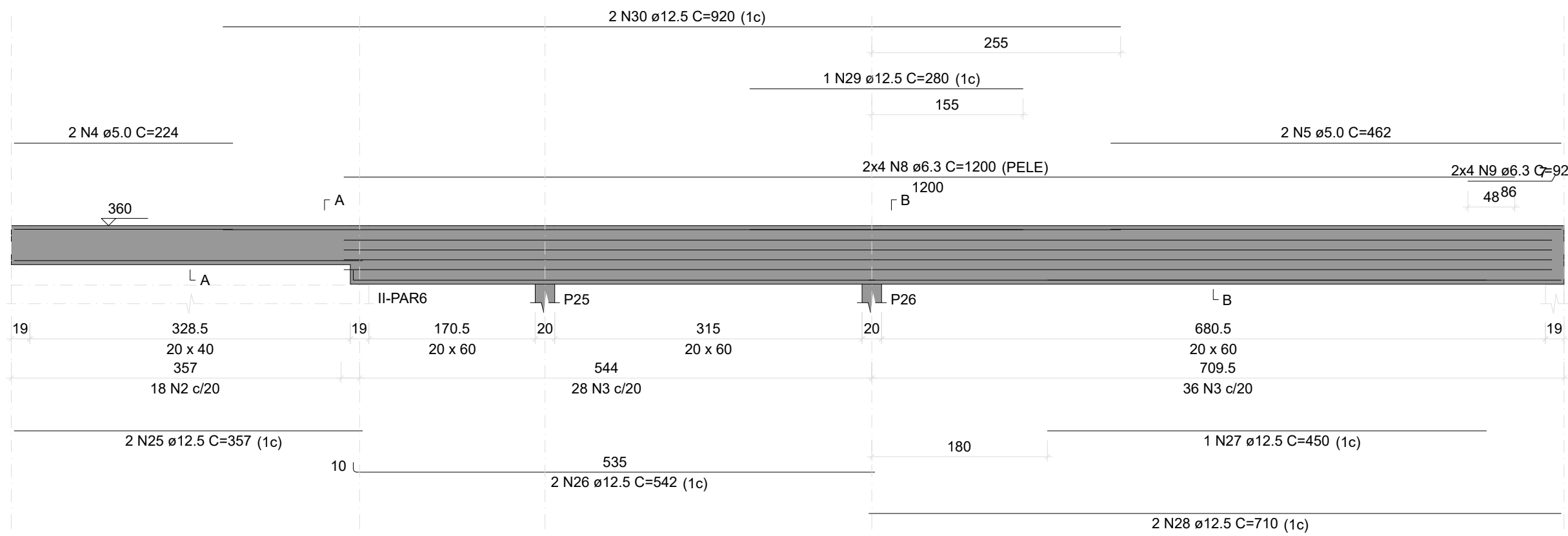


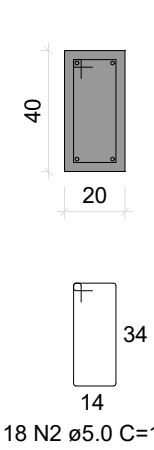
II-V1
ESC 1:50



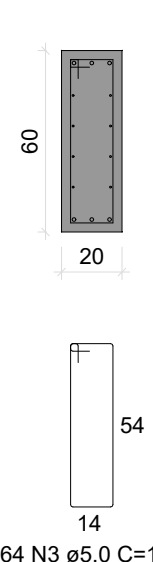
II-V2
ESC 1:50



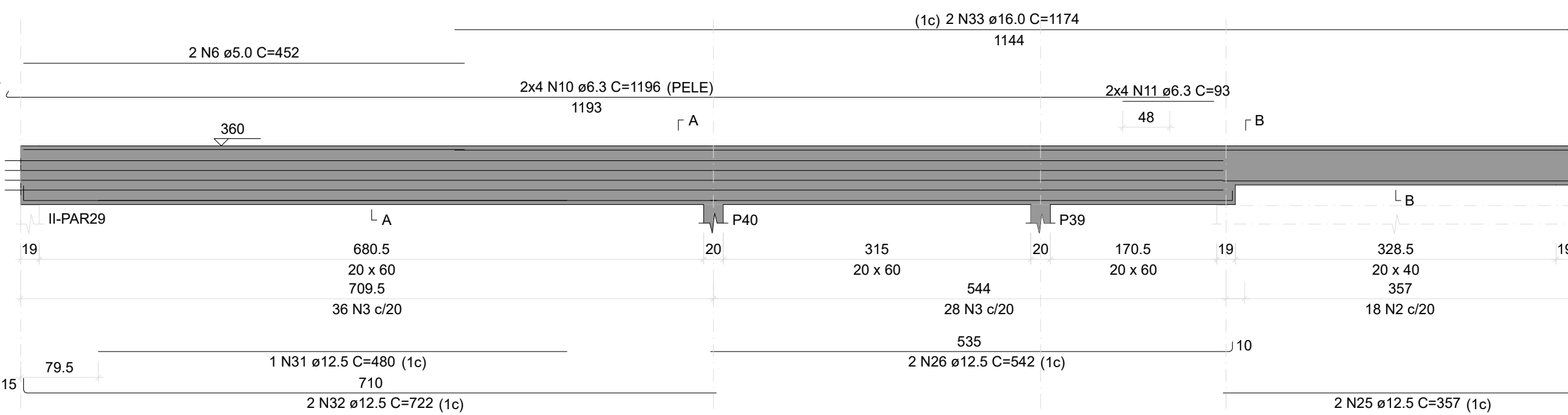
SEÇÃO A-A
ESC 1:25



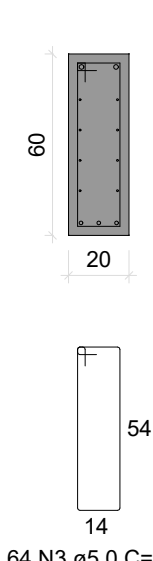
SEÇÃO B-B
ESC 1:25



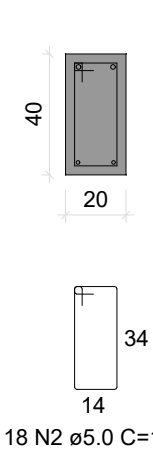
II-V3
ESC 1:50



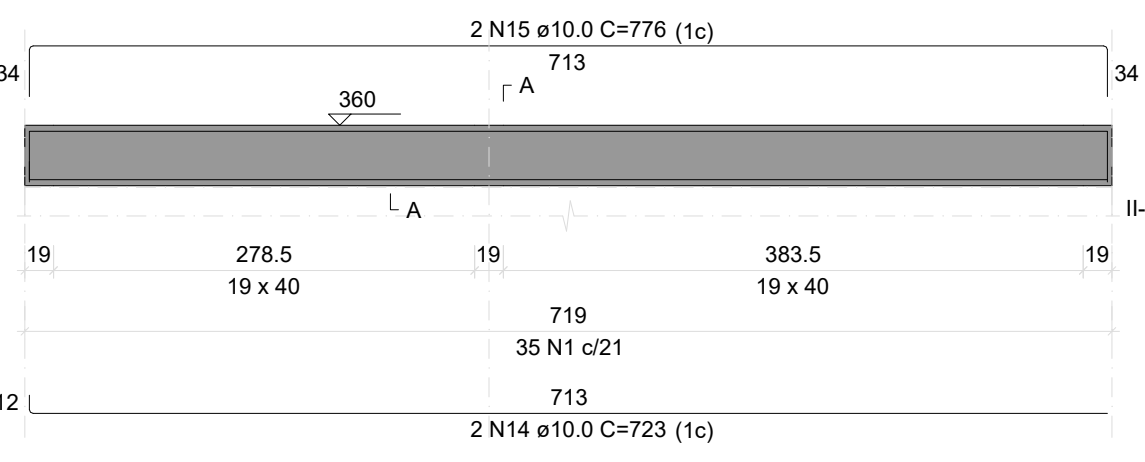
SEÇÃO A-A
ESC 1:25



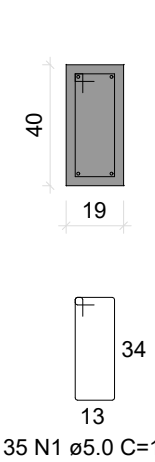
SEÇÃO B-B
ESC 1:25



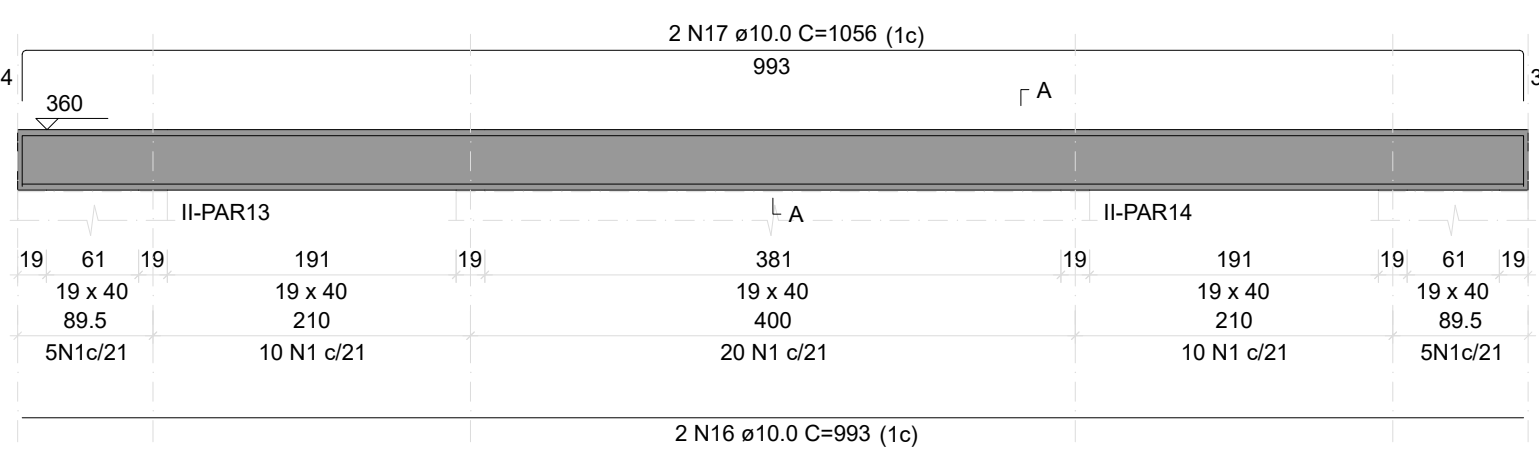
II-V4
ESC 1:50



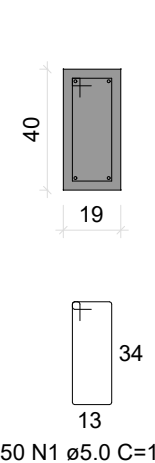
SEÇÃO A-A
ESC 1:25



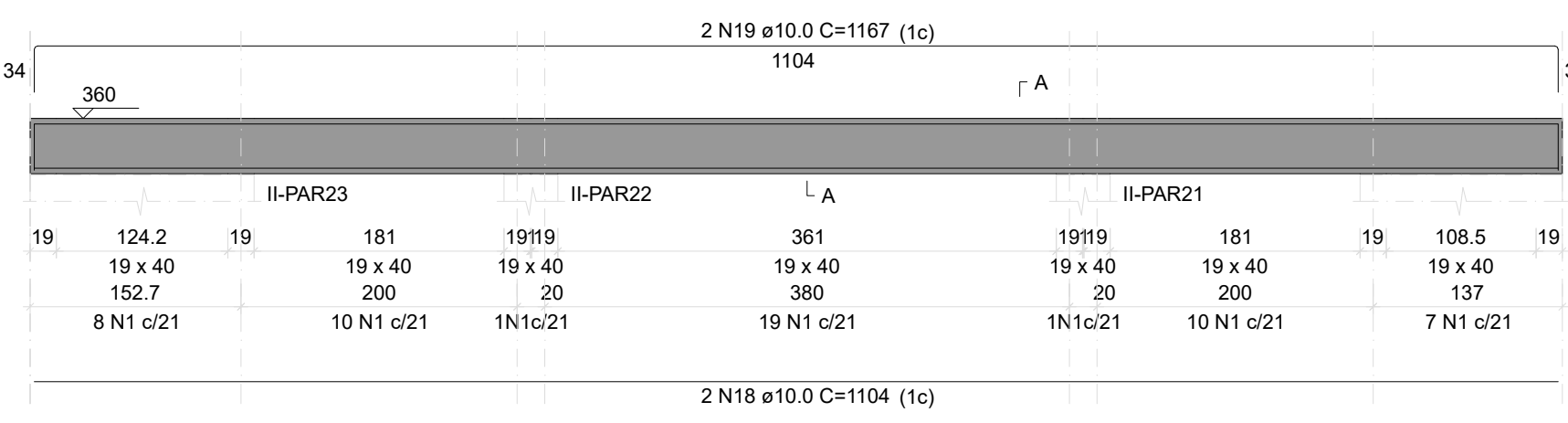
II-V5
ESC 1:50



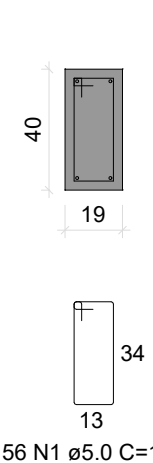
SEÇÃO A-A
ESC 1:25



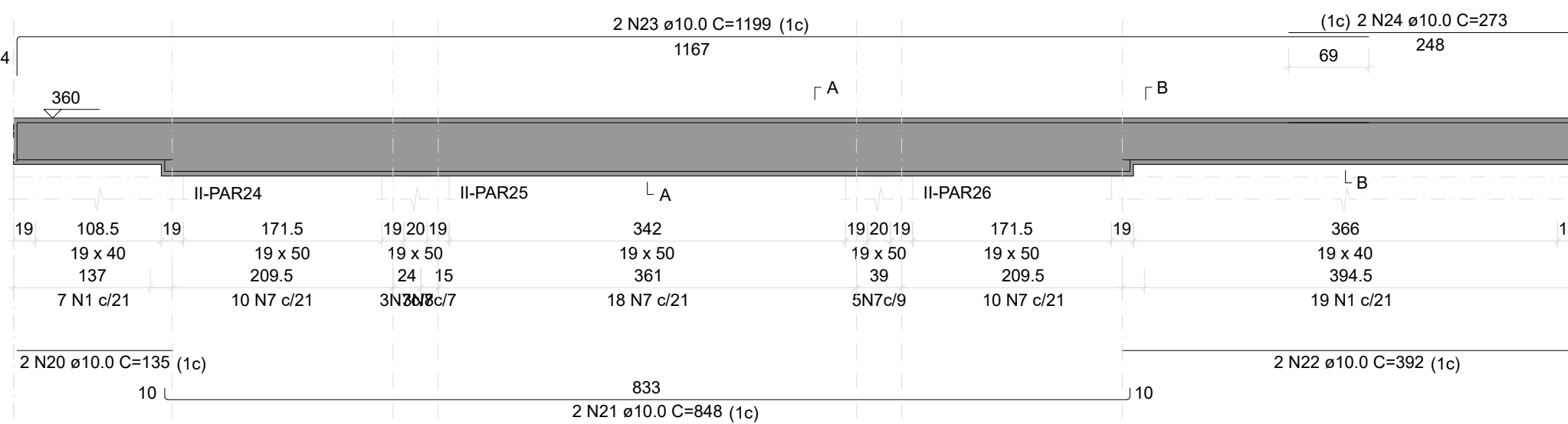
II-V6
ESC 1:50



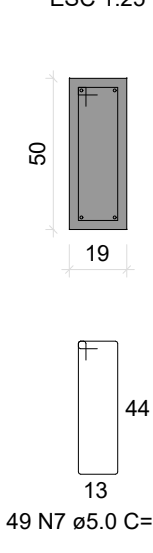
SEÇÃO A-A
ESC 1:25



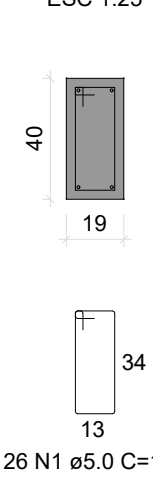
II-V7
ESC 1:50



SEÇÃO A-A
ESC 1:25



SEÇÃO B-B
ESC 1:25



RELAÇÃO DO AÇO

AÇO	N	DIAM (mm)	QUANT	C.UNIT (cm)	C.TOTAL (cm)
CA60	1	5.0	202	105	21210
	2	5.0	36	107	3852
	3	5.0	128	147	18816
	4	5.0	2	224	448
	5	5.0	2	462	924
CA50	6	5.0	2	452	904
	7	5.0	49	125	6125
	8	6.3	8	1200	9600
	9	6.3	8	92	736
	10	6.3	8	1106	8848
	11	6.3	8	93	744
	12	10.0	2	711	1422
	13	10.0	2	774	1548
	14	10.0	2	723	1446
	15	10.0	2	776	1552
	16	10.0	2	993	1986
	17	10.0	2	1096	2192
	18	10.0	2	1104	2208
	19	10.0	2	1167	2334
	20	10.0	2	135	270
	21	10.0	2	848	1696
	22	10.0	2	392	784
	23	10.0	2	1199	2398
	24	10.0	2	273	546
	25	12.5	4	357	1428
	26	12.5	4	542	2168
	27	12.5	1	450	450
	28	12.5	2	710	1420
	29	12.5	1	280	280
	30	12.5	2	920	1840
	31	12.5	1	480	480
	32	12.5	2	722	1444
	33	16.0	2	1174	2348


RESUMO DO AÇO

AÇO	DIAM (mm)	C.TOTAL (m)	PESO + 10% (kg)
CA50	6.3	206.5	55.6
	10.0	203	137.7
	12.5	95.1	100.8
CA60	16.0	23.5	40.8
	5.0	522.8	86.6
PESO TOTAL (kg)			
CA50	334.8		
CA60	88.6		

Volume de concreto (C-25) = 7.30 m³
Área de forma = 65.56 m²

TODAS AS MEDIDAS E NÍVEIS DEVERÃO SER CONFERIDOS NO LOCAL.			
R003			
R002			
R001			
REVISÃO	ALTERAÇÕES	EMIÇÃO	RESPONSÁVEL

UNIDADE DE SAÚDE QUINTA DO PORTAL



PREFEITURA MUNICIPAL DE PORTO ALEGRE
SECRETARIA MUNICIPAL DE OBRAS E INFRAESTRUTURA
DIRETORIA DE PROJETOS E OBRAS VIÁRIAS

RESPONSÁVEIS TÉCNICOS
PROJETO DE ARQUITETURA:
JULIANO FABRO
ARQUITETO E URBANISTA
CAU.A22875-3 | ID. FUNC.: 1609270

PROJETO DE ARQUITETURA:
LUIZ PRESTES
ARQUITETO E URBANISTA
CAU.A23531-8 | ID. FUNC.: 270122

PROJETO EXECUTIVO ESTRUTURAL:
AMANDA DA CUNHA FIGUEIRA
ENGENHEIRA CIVIL
CREA.RS193.391 | ID. FUNC.: 1606638

COORDENADOR
CÉSAR FABRÍCIO BREDA
DESENHO
AMANDA

OBRA
US QUINTA DO PORTAL

ENDEREÇO
ESTRADA AFONSO LOURENÇO MARIANTE, Nº 5547 - LOMBA DO PINHEIRO

PROJETO
EXECUTIVO ESTRUTURAL

ESCALA
INDICADA

ÁREA
672.53 m²

MUNICÍPIO
PORTO ALEGRE/RS

Nº PRANCHA
PE32

ASSUNTO
**SETOR SII
VIGAS TERREO**

NOME ARQUIVO
USQP-2024-EST-PEE.dwg